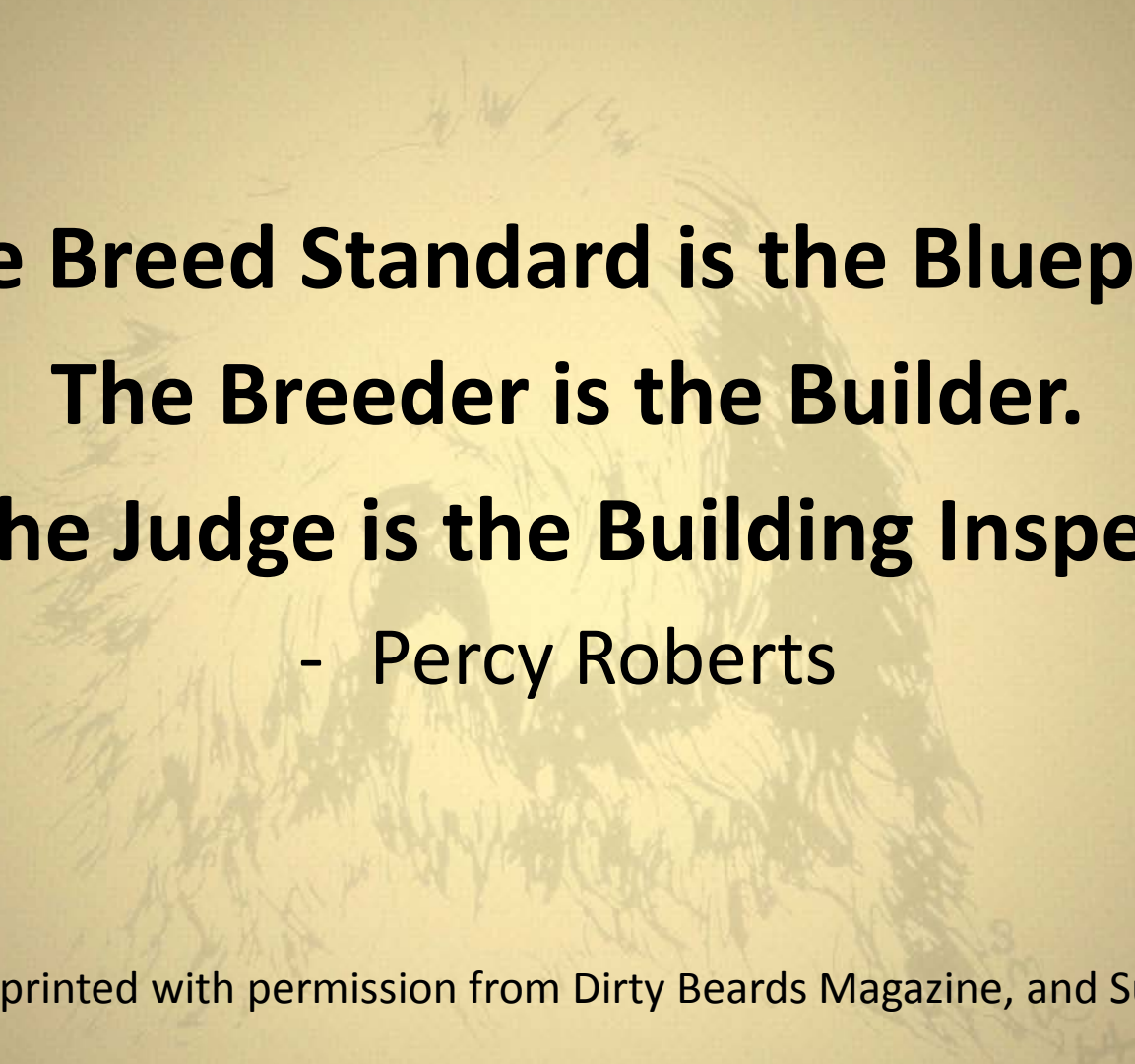


Old English Sheepdog Club of America



JUDGES EDUCATION



**“The Breed Standard is the Blueprint.
The Breeder is the Builder.
And the Judge is the Building Inspector.”
- Percy Roberts**

- Reprinted with permission from Dirty Beards Magazine, and Susan Vroom.

HISTORY



GENERAL APPEARANCE

- 🐕 Balanced
- 🐕 Thick Set
- 🐕 Able Bodied
- 🐕 Agile
- 🐕 Coat Profuse,
But Not Excessive



“Soundness is of the Greatest Importance”

SIZE – PROPORTION – SUBSTANCE

- 🐕 Look Beyond Size Alone
 - 🐕 Go Beyond the Coat – Hands On
 - 🐕 Free from Legginess or Weaselness
 - 🐕 Thick Set
 - 🐕 Well Muscled
 - 🐕 Plenty of Bone
 - 🐕 Balanced
-
- 🐕 Square –
Length the Same as Height



HEAD

- Well Defined Stop
- Width Should Equal Length
- Muzzle – Deep, Blunted End (Truncated)



NECK – TOPLINE – BODY



- 🐕 Neck – Long, Arched
- 🐕 Topline – Arched Over Stout Loin
- 🐕 Body – Short, Compact, Well Sprung Rib
- 🐕 Tail – Docked Close to the Body

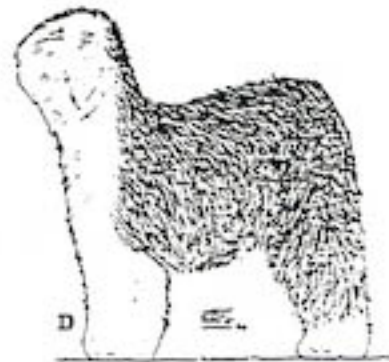
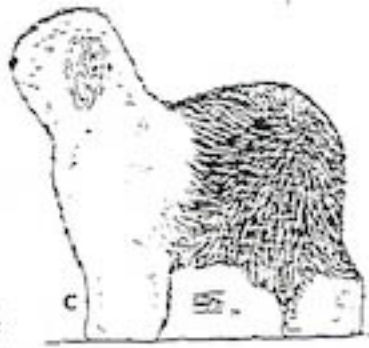
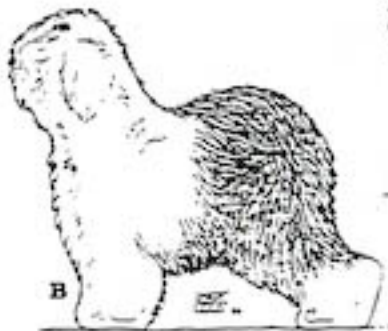
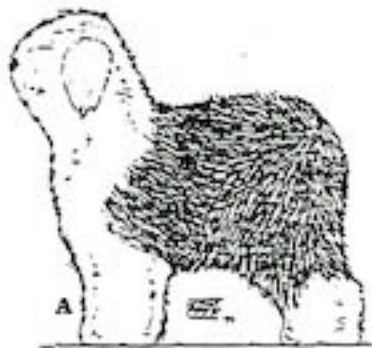
YOU BE THE JUDGE

By Robert Cole

OLD ENGLISH SHEEPDOG

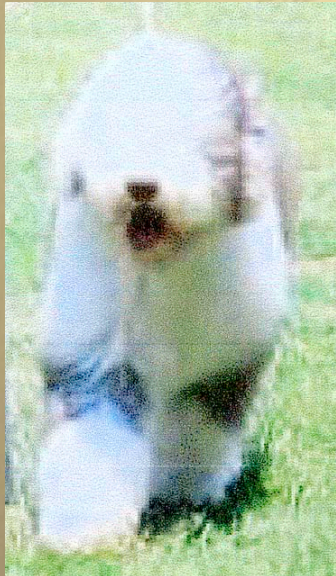
(Based on the AKC 1990 Revised Standard)

By Robert Cole



FOREQUARTERS

- 🐕 Shoulders – Well Laid Back
- 🐕 Forelegs – Dead Straight, Plenty of Bone
- 🐕 Height 50/50 –
From Top of Withers to Elbow = Elbow to Ground



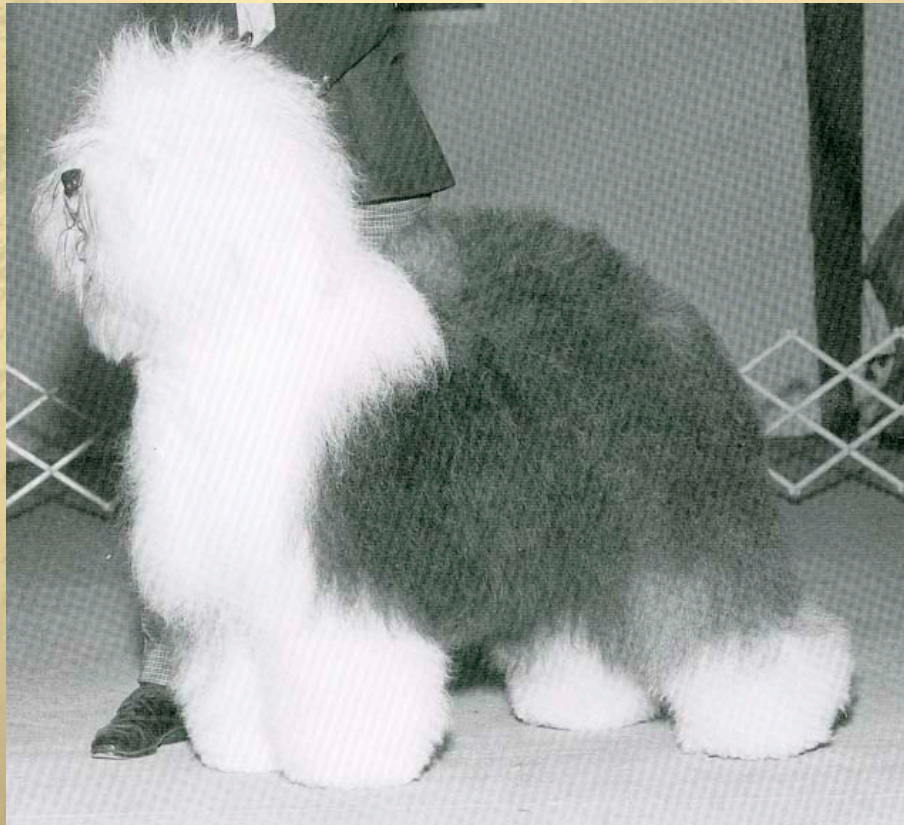
HINDQUARTERS



- 🐕 Round – Muscular
- 🐕 Well Let Down Hocks – Feel All the Way Down!
- 🐕 Croup – Sloping – Not High and Flat

FEET

- Small, Round, Well Arched Toes,
Thick Pads – All 4 Pointing Straight Ahead



COAT



**“Quality and texture of coat
to be considered above mere profuseness.”**

COLOR AND MARKINGS



Puppy Coat



Adolescent Coat



Adult with Light Colored Coat



Adult with Darker Coat

“Any shade of gray, grizzle, blue or blue merle with or without white markings or in reverse.”

COLOR & MARKINGS

Markings



The markings on this puppy are acceptable as are the markings on these adults. These adult dogs are identical except for the markings, notice how it changes your perception.



Additionally, be careful not to be influenced by markings creating an illusion. An example would be a dog that looks longer than he is because of dark markings going forward on the shoulder or a neck looking longer than it is because of a long shawl.

COLOR AND MARKINGS



GAIT

“When trotting, movement is free and powerful, seemingly effortless, with good reach and drive, and covering maximum ground with minimum steps. Very elastic at a gallop. May amble or pace at slower speeds.”



GAIT



TEMPERAMENT



“An adaptable, intelligent dog of even disposition, with no sign of aggression, shyness or nervousness”

The Five Hallmarks of the Old English Sheepdog

Balance & Proportion

Type in an OES comes from his proportions. The picture remains unchanged regardless of the size. The OES is balanced regardless of height, color or markings. He is compact and square with substantial bone. An OES is not low and long bodied or tall and short bodied. Square proportions measured from the withers to the ground, point of shoulder to the ischium. Neck is fairly long and gracefully arched. Shoulders well laid back and narrow at the points. Forelegs dead straight with plenty of bone. Hocks well let down, metatarsus are perpendicular to the ground from any angle. Broader at the rump than at the shoulder. The body is thickset, muscular, able-bodied.

The Five Hallmarks of the Old English Sheepdog

Head

Strong, square truncated muzzle. The nose is always black and large. Definitive stop, well arched over eyes. Large squarely formed skull. Dark brown eyes, one or two blue, pearl, china or walleye is typical. Scissors or level bite. A long narrow head or snippy muzzle is a deformity.



The Five Hallmarks of the Old English Sheepdog

Topline

The OES topline is a unique characteristic. It is gently arched over a very broad, stout loin. The topline is not to be mistaken for a roach back nor is it a sway back. The correct topline has a gentle rise with the highest point over the loin.



The Five Hallmarks of the Old English Sheepdog

Coat

The OES has a thick soft undercoat next to his body and a crisp harsh shaggy coat on the outside. Quality of coat is more important than mere profuseness. Color is any shade of gray, grizzle, blue or blue merle with or without white markings or in reverse.



The Five Hallmarks of the Old English Sheepdog

Movement

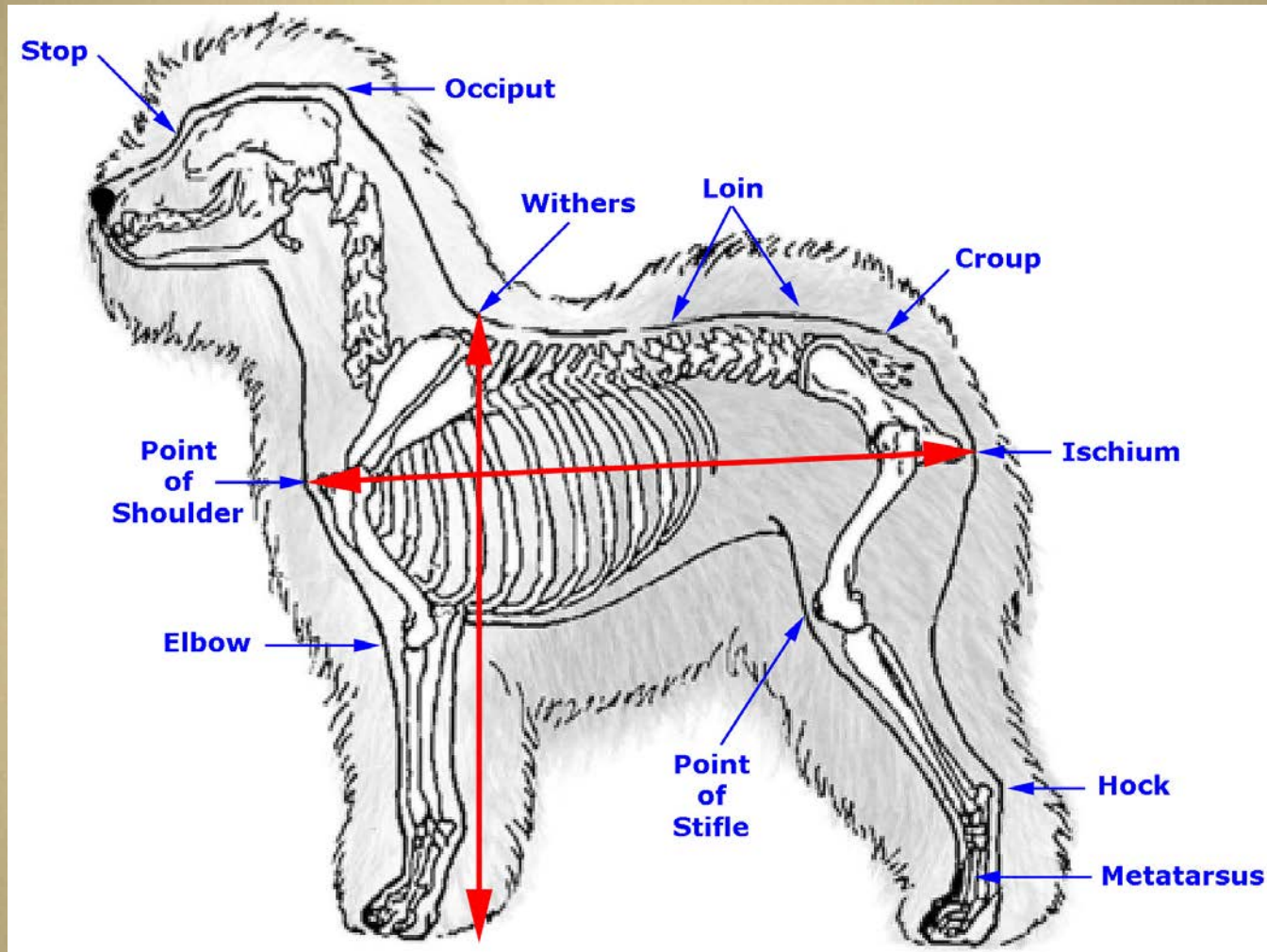
When trotting the movement is free and powerful seeming effortless, with good reach and drive and covers maximum ground with minimum steps. The OES must maintain balance, proportion and topline in motion as when it stands. An OES is to be judged at a trot. May pace or amble at slower speeds.



Examining the Old English Sheepdog

It is of utmost importance for judges to feel for the distinct characteristics that define the breed. The mental picture obtained from your hands, combined with the overall visual appearance should simplify the choice. Grooming can hide faults. It is imperative that judges look past the grooming and feel carefully for correct structure.

Examining the Old English Sheepdog



- **Dogs: 22 in. (55.8 cm) and upward.**
- **Bitches: 21 in. (53.3 cm) and upward.**

OES IN PERFORMANCE EVENTS



OES IN PERFORMANCE EVENTS



OES IN PERFORMANCE EVENTS



